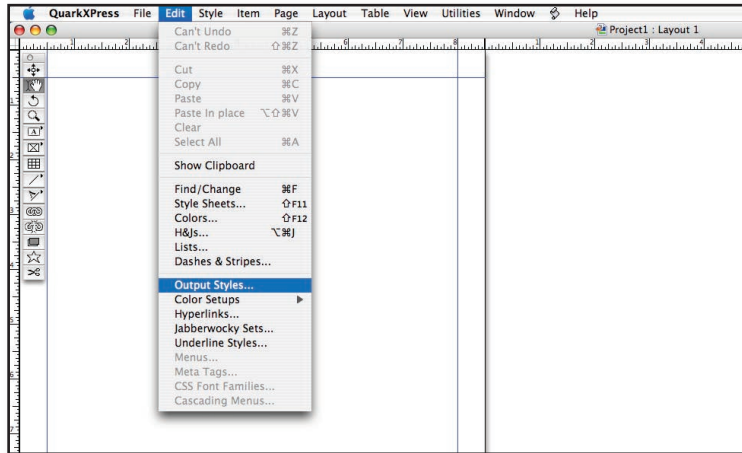
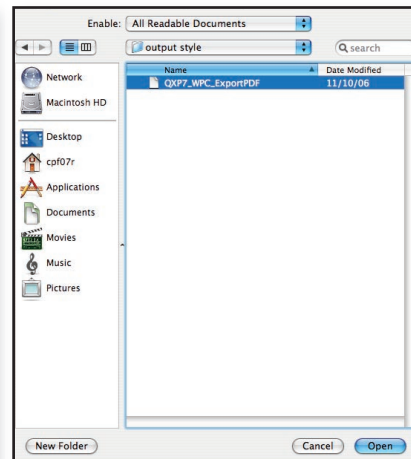
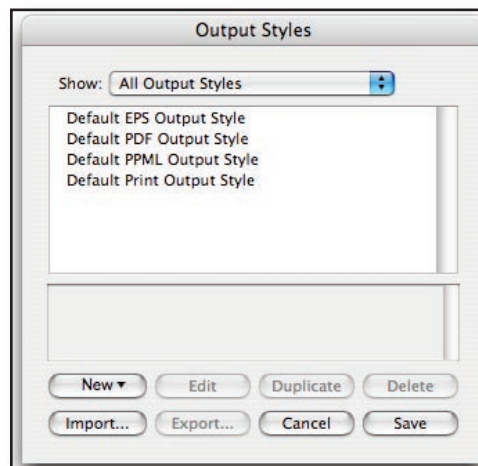


Quark 7 and 8 Export PDF

Use these step by step instructions to create “print quality” PDF’s for submission to Walsworth.



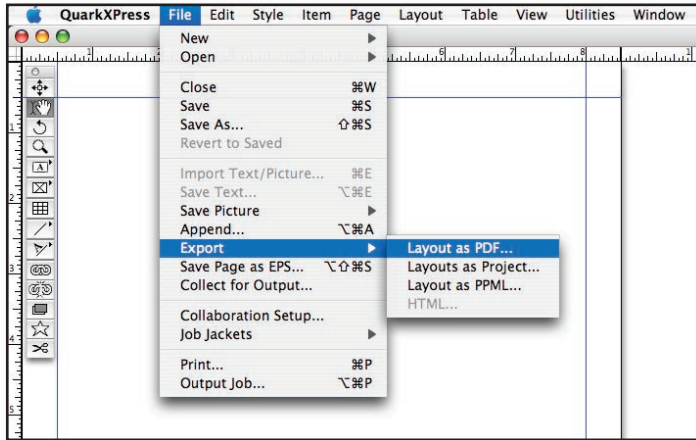
Step 1 Walsworth provides PDF export settings designed to optimize the PDF documents you sent to us for printing. This setting is available on our website or from our technical support staff. To load the Walsworth standard settings, select Edit > Output Styles...



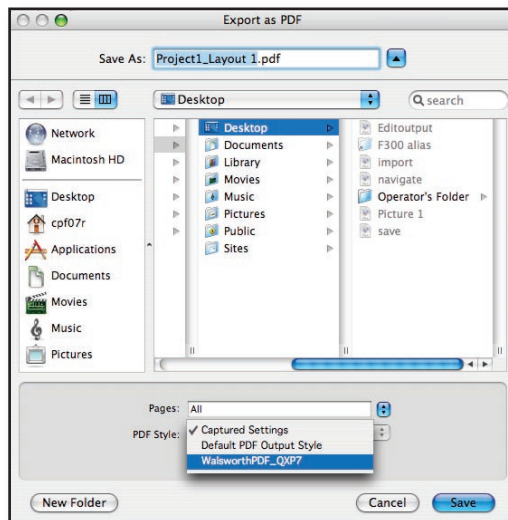
Step 2 The Output Styles window will open. Select “Import” and navigate to and select the output style that WPC has provided you. Be sure that Enable reads All Documents or you may not be able to see the output style that we have sent you. Select the QXP7 WPC Export PDF style and then select “Open”. Once back at the Output Styles window select “Save”.

Step 3 Before generating your PDF files, we suggest that you use a standard preflight application such as Flight Check to ensure there are no problems with your file prior to submitting your final files.

Quark 7 and 8 Export PDF



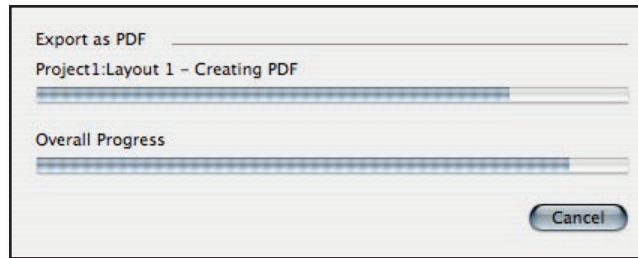
Step 4 You are now ready to create your PDF document. Select File>Export Layout as PDF.



Step 5 The Export window will appear. Here you need to determine the file name and location of the exported PDF document. We suggest that you use a descriptive name of the file along with a page range. Often, we use specific naming conventions for uploading projects to our WPCdirect.com website (Pri-nergy Insite). If you have been given a naming convention, please use it now.

At the bottom of the screen select PDF Style and select the new Walsworth Output Style that you have just loaded. This will ensure that your PDF is created to our standards. Once you see this setting select "Save".

Quark 7 and 8 Export PDF



Step 6 Your PDF is being generated. This will take a few seconds or several minutes depending on the number of pages and their complexity.



Step 7 After your PDF is generated ALWAYS review this PDF and print any proofs from this document, not the original Quark application files. If you are using a PDF preflight software such as Enfocus Pitstop, Walsworth can supply our suggest preflight settings.

Some things to look for in the final PDF are:

- Visible resolution issues - easier to see in the final PDF than in Quark
- Bleed requirements - Our standard recommendation is 1/8" (.125")
- Page numbers
- Missing images or text
- Check to be sure that you have the correct number of pages that match the PDF document.

After you review and proof your final PDF, it is ready to send to Walsworth. We await your files. For information on how to submit your pages, contact our Commercial Technical Support Department.